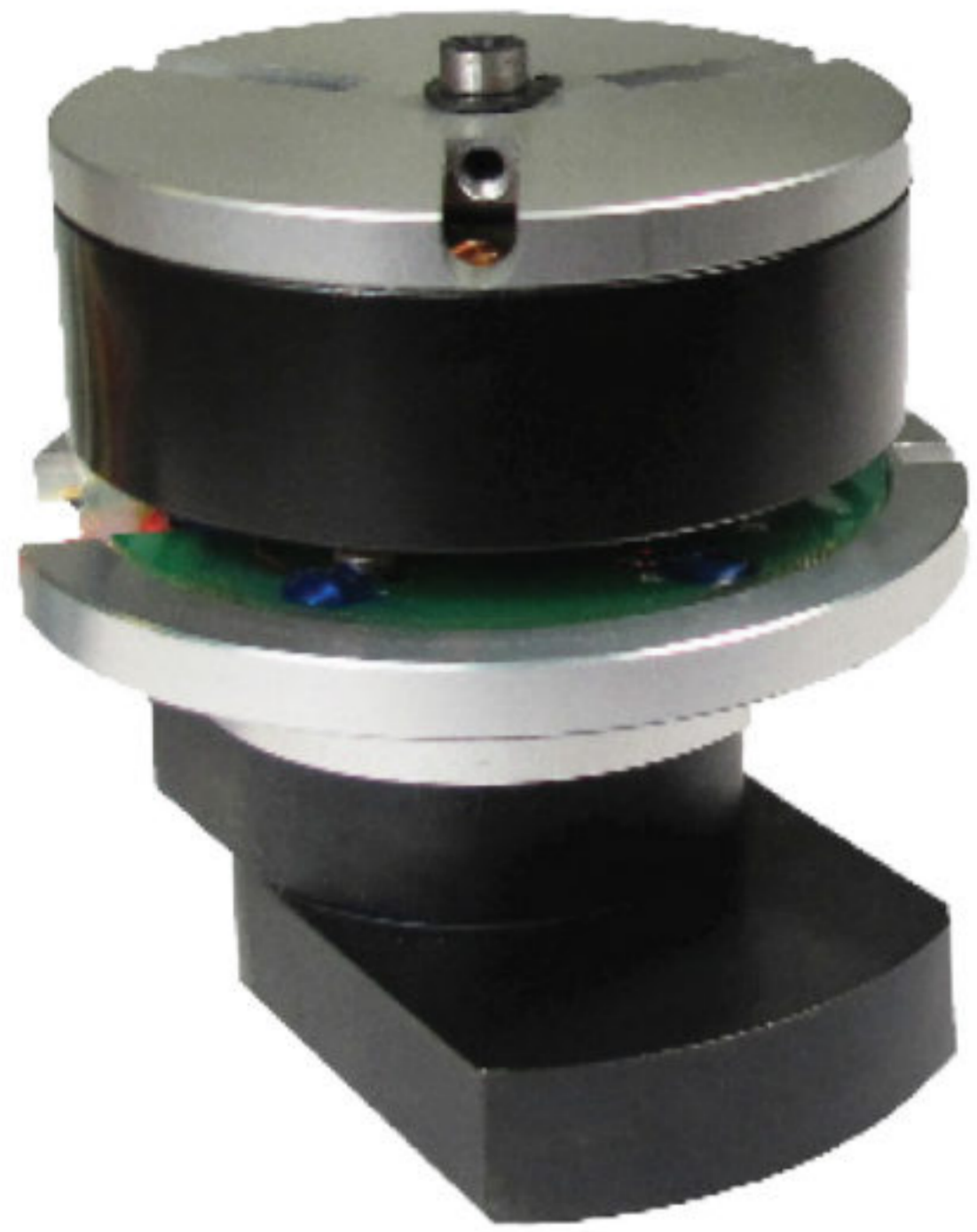


# SurfPrep™



## More Power

350 watt brush-less outer-runner motor is constructed with bigger magnets providing greater torque which saves energy compared to inner-runner motors

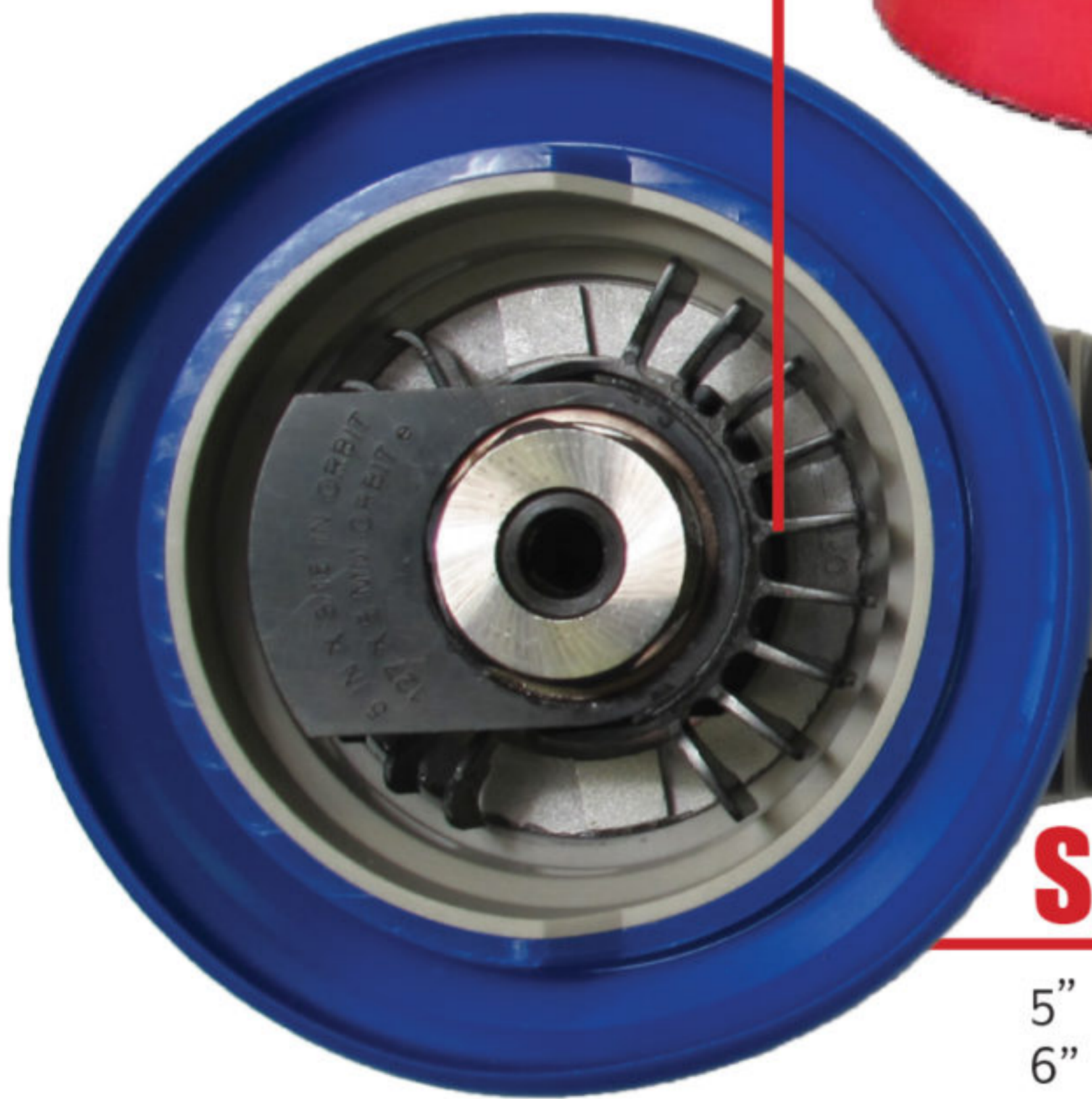


## Cutting-Edge Design

Low-profile design with ergonomic hand grip for enhanced control and comfort for both right & left-handed operators. Balanced wrist support for two-handed sanding.

## Cooling Fan

Patented spindle bearing fan enhances life by keeping motor & bearings at a lower temperature



## Longer Life

Computer board completely protected with patented rubberized seal preventing environmental contamination. No lubrication required and maintenance free.

## Orbits

3/16" for more aggressive 'level' sanding  
3/32" for less aggressive 'finish' sanding

## Speeds

4 operational speeds:  
4,000, 7,000  
9,000 &  
10,000 RPM.  
Versatile in all applications from level sanding to polish sanding

## Overload Protection Programs

'Downforce Overload System' protects from excessive pressure. 'Temperature Overheat System' monitors temperature of internal electronic systems.

## Internal Breaking System

Quick-stop speed reduction stops backup pad from spinning when pressure is taken off of throttle lever.

## Certified Tool Repair

Qualified service technicians available.  
All OEM parts available.

## Portable

Sand on-site or in a production environment. Plugs directly into standard 110 volt outlet. Compact and lightweight.

## Dust Free Sanding

Available in Central Vacuum which connects to a stand alone vacuum system.

## Specifications

5" 2.89 lbs H: 3.94" L: 8.86"  
6" 2.95 lbs H: 3.94" L: 9.33"

# 5" & 6" Electric Sanders

# ELECTRIC RAY